



Mokau River – Annual River Monitoring Summary - 2025

Catchment monitoring by King Country River Care, commenced in 2021. The Mokau River catchment the monitoring programme covers up to 16 monitoring sites across 6 sub-catchments, sampled on a quarterly basis. Waikato Regional Council (WRC) has 5 monitoring sites in 4 of these 6 sub-catchments, which are monitored monthly. A water quality baseline was calculated from the time the catchment group was formed using five years (Jan 2015 – Dec 2019) of monthly monitoring data, collected at the WRC sites. The location of the monitoring sites for each sub-catchment are shown on Maps 1 through to 6, below.

2025 represents the fifth consecutive year of catchment monitoring. Water samples were collected on 27 Feb, 15 May, 25 August and 12 November 2025, during stable weather conditions to avoid any significant rainfall events. River flow strongly influences water quality and the river flow hydrograph for Mokau River at Totoro Road is provided on page 18.

The Lower Mokau River Sub-catchment

Key Resources Being Lost from the Land

Monitoring across five sites in 2025 shows that the key resources lost from the Lower Mokau sub-catchment were *E. coli* and Sediment (reflected by low water clarity). *E. coli* was elevated at four sites and slightly elevated above the Wairere Dam. Sediment loss was elevated at three sites and slightly elevated at Mangaotaki River, State Highway 3 bridge.

- Elevated *E. coli* represents a loss of organic matter and nutrients as it is largely associated with animal manure in rural catchments.
- Loss of Sediment represents a loss of soil and nutrients.

Catchment Hotspots

- ***E. coli***: Elevated at all sites but the Wairere Dam, which was still slightly elevated – Only Wairere Dam met national health guidelines for swimming. In descending order, concentrations were highest at Mokauiti Stream - 3 way point Aria, Totoro Rd, Mangaotaki River, and lowest in the Mokau River at Wairere Dam.
- **Sediment**: Suspended sediment was high at three sites. The highest levels were in Mokauiti Stream; the lowest levels were at Awakau Rd.

The water quality dials on the following page summarise the results collected from the sites in the Lower Mokau catchment. The dial on the left shows the baseline for the catchment, covering 5 years of regional council monitoring at the five WRC monitoring sites (Awakau Road, Mokauiti Stream at 3-way Point Aria, Mangaotaki River-SH3 bridge, Totoro Road and Mangaokewa Road off SH30). The dial on the right combines all data collected at 5 sites in 2025, 45 samples in total. Arrows indicate either an increase or decrease in values compared to the sub-catchment baseline. **An increase in water clarity is positive** for river health while **an increase in all other indicators may impair river health**.

In 2025, nutrient indicators met national water quality limits, while water clarity/suspended sediment and *E. coli* did not. Compared to the baseline – Water clarity was higher and *E. coli* was greater. Conversely, dissolved reactive phosphorus was less while Nitrogen was the same as the baseline levels (see Figure 1).

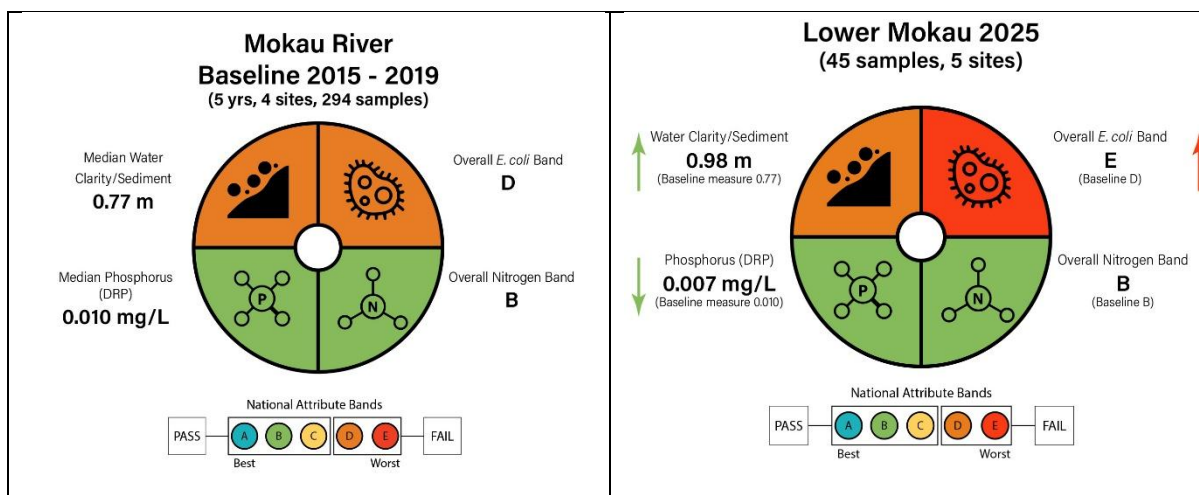
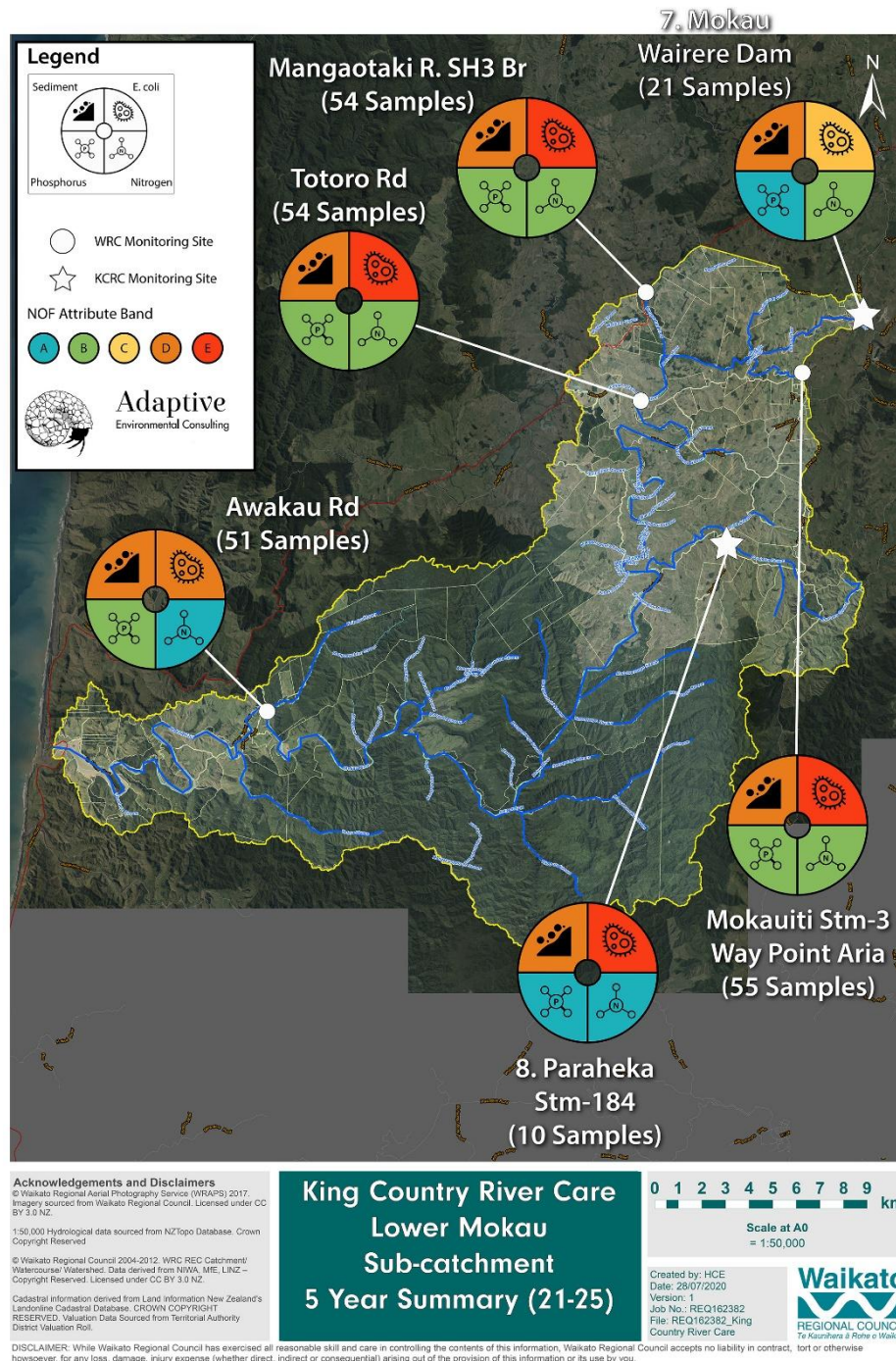


Figure 1. Water quality dials for the six sites in the Lower Mokau catchment. The dial on the left shows the sub-catchment baseline (2015-2019) and the dial on the right combines results collected in the 2025 monitoring period.

The above results have been assessed against the national freshwater attribute bands under the national policy statement for freshwater (NPS-FM 2020). The overall *E. coli* band is based on the following four measures, the percentage of samples exceeding 540 (CFU/100ml), the percentage of samples exceeding 260 (CFU/100ml), the median value and the 95th percentile (or upper 5% of *E. coli* concentrations). The overall nitrogen band is based on the following six measures, Nitrate Toxicity (median and 95th percentile), Ammonia Toxicity (median and maximum annual value) and Dissolved Inorganic Nitrogen (median and 95th percentile).

The map below represented five years of monitoring in the Lower Mokau River catchment. Each dial shows the combined water quality results from six sites monitored since the KCRC monitoring programme commenced in 2021. The number of samples represented by each dial is shown, some sites are no longer monitored and therefore, represent fewer samples, see Map 1 below.

Detailed results for 2025 at each site are presented in Table 1 on page 15.



Map 1. Water quality monitoring results for 5 years of data at the six monitoring sites in Lower Mokau (four WRC Sites & two KCRC sites).

The Mangaotaki – Mairoa Sub-catchment

Key Resources Being Lost from the Land

Monitoring across four sites in 2025 shows that the key resources lost from the Mangaotaki – Mairoa sub-catchment were *E. coli* and Sediment (reflected by low water clarity).

- Loss of Sediment represents a loss of soil and nutrients.
- Elevated *E. coli* represents a loss of organic matter and nutrients as it is largely associated with animal manure in rural catchments.

Catchment Hotspots

- ***E. coli***: Elevated at all sites - none met national health guidelines for swimming. Concentrations were highest at Mangaotaki River – SH3 Bridge and 11-Mangaotaki stream, and were lowest at Waitanguru stream.
- **Sediment**: Suspended sediment was elevated at two sites - Kihikihi Stream and Mangaotaki stream, failing to reach the national bottom line for water clarity. Levels were also slightly elevated at 11-Mangaotaki River-SH3. The lowest levels were recorded in Waitanguru Stream which had a high median water clarity of 2.35 m.

The below water quality dials summarise the results collected from the sites in the Mangaotaki – Mairoa sub-catchment alongside the Mokau River water quality Baseline. The dial on the left shows the baseline for Mokau River, covering 5 years of regional council monitoring at the five WRC monitoring sites (Awakau Road, Mokauiti Stream at 3-way Point Aria, Mangaotaki River-SH3 bridge, Totoro Road and Mangaokewa Road off SH30). The dial on the right combines all data collected at four sites in the Mangaotaki – Mairoa sub-catchment in 2025, 23 samples in total. Arrows indicate either an increase or decrease in values compared to the sub-catchment baseline. **An increase in water clarity is positive** for river health while **an increase in all other indicators may impair river health**.

In 2025, nutrient indicators and water clarity/suspended sediment met national water quality limits, while *E. coli* did not. Compared to the baseline – Water clarity and *E. coli* were higher. There was a slight reduction in dissolved reactive phosphorus and no difference in nitrogen compared to baseline levels (see Figure 2).

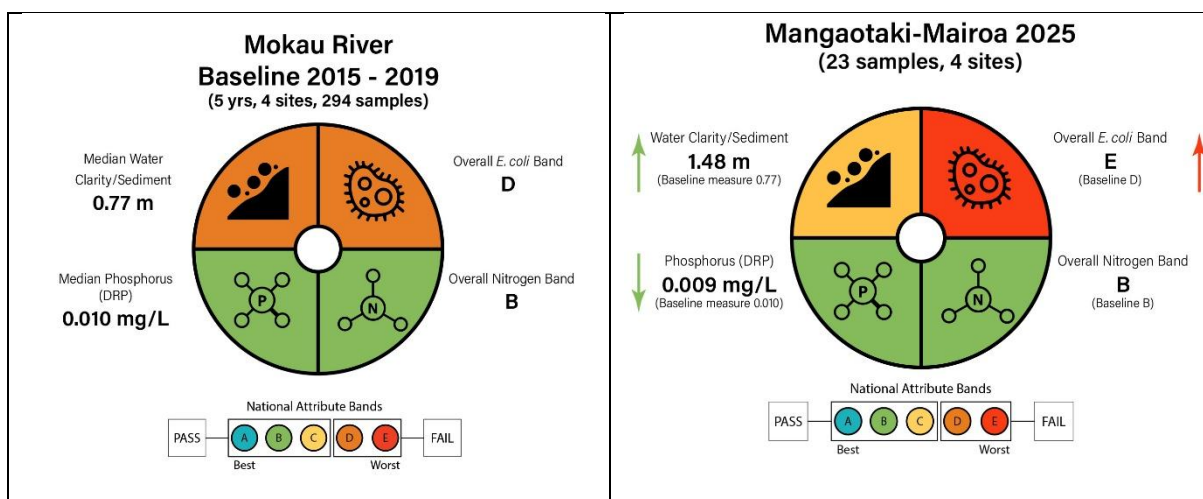
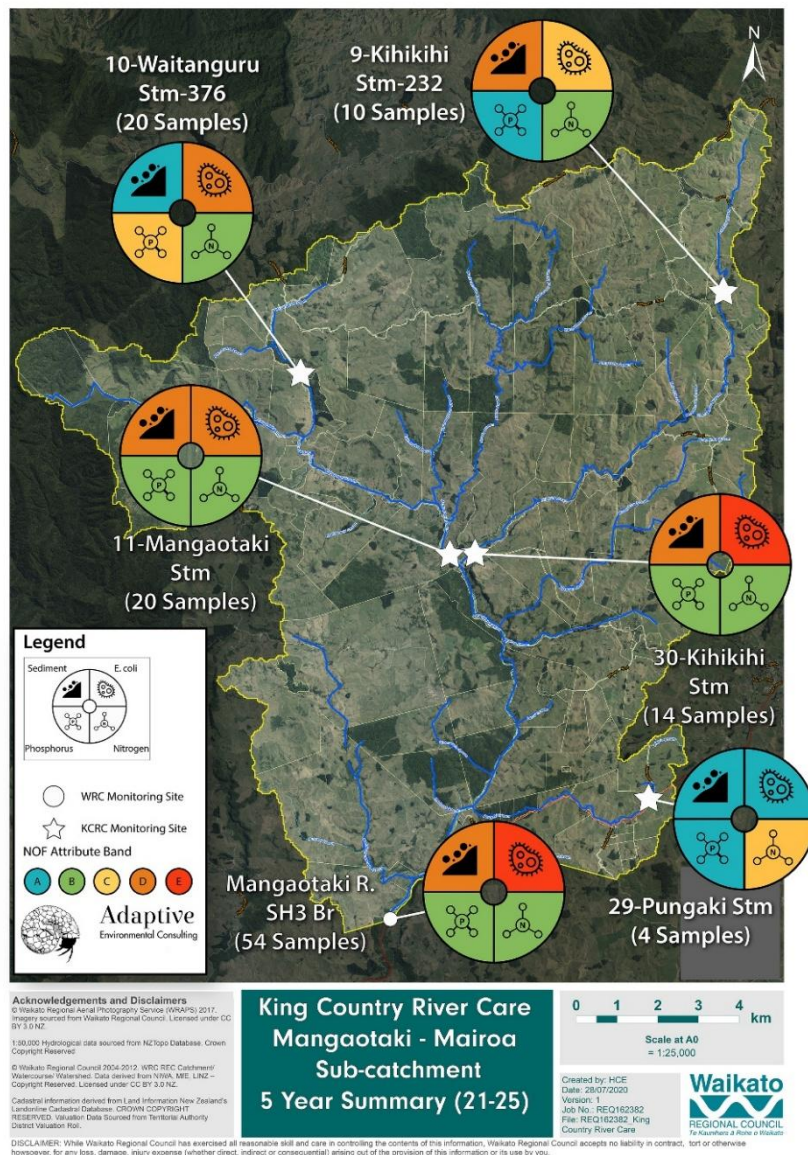


Figure 2. Water quality dials for the six sites in the Mangaotaki-Mairoa catchment. The dial on the left shows the sub-catchment baseline (2015-2019) and the dial on the right combines results collected in the 2025 monitoring period.

The above results have been assessed against the national freshwater attribute bands under the national policy statement for freshwater (NPS-FM 2020). The overall *E. coli* band is based on the following four measures, the percentage of samples exceeding 540 (CFU/100ml), the percentage of samples exceeding 260 (CFU/100ml), the median value and the 95th percentile (or upper 5% of *E. coli* concentrations). The overall nitrogen band is based on the following six measures, Nitrate Toxicity (median and 95th percentile), Ammonia Toxicity (median and maximum annual value) and Dissolved Inorganic Nitrogen (median and 95th percentile).

The map below represented five years of monitoring in the Mangaotaki - Mairoa River sub-catchment. Each dial shows the combined water quality results from six sites monitored since the KCRC monitoring programme commenced in 2021. The number of samples represented by each dial is shown, some sites are no longer monitored and therefore, represent fewer samples, see Map 2 below.

Detailed results for 2025 at each site are presented in Table 2 on page 15.



Map 2. Water quality monitoring results for 5 years of data at the six monitoring sites in Mangaotaki-Mairoa catchment (one WRC Site & five KCRC sites).

The Mapiu-Mapara Sub-catchment

Key Resources Being Lost from the Land

Monitoring across four sites in 2025 shows that the key resources lost from the Mapiu-Mapara sub-catchment were *E. coli* and Sediment (reflected by low water clarity).

- Loss of Sediment represents a loss of soil and nutrients.
- Elevated *E. coli* represents a loss of organic matter and nutrients as it is largely associated with animal manure in rural catchments.

Catchment Hotspots

- ***E. coli***: Elevated at all sites - none met national health guidelines for swimming. Concentrations were highest in Mangaiti Stream, and were lowest in Mapara Stream.
- **Sediment**: Suspended sediment was high at all sites. The highest levels were in Mangaiti Stream and the lowest levels were in Puputaha Stream.

The below water quality dials summarise the results collected from the four sites in the Mapiu-Mapara sub-catchment alongside the Mokau River water quality Baseline. The dial on the left shows the baseline for Mokau River, covering 5 years of regional council monitoring at the five WRC monitoring sites (Awakau Road, Mokauiti Stream at 3-way Point Aria, Mangaotaki River-SH3 bridge, Totoro Road and Mangaokewa Road off SH30). The dial on the right combines all data collected at four sites in 2025, 16 samples in total. Arrows indicate either an increase or decrease in values compared to the sub-catchment baseline. **An increase in water clarity is positive** for river health while **an increase in all other indicators may impair river health**.

In 2025, nutrient indicators met national water quality limits, while water clarity/suspended sediment and *E. coli* did not. Compared to the baseline – Water clarity and *E. coli* were higher, while dissolved reactive phosphorus and nitrogen were lower (see Figure 3).

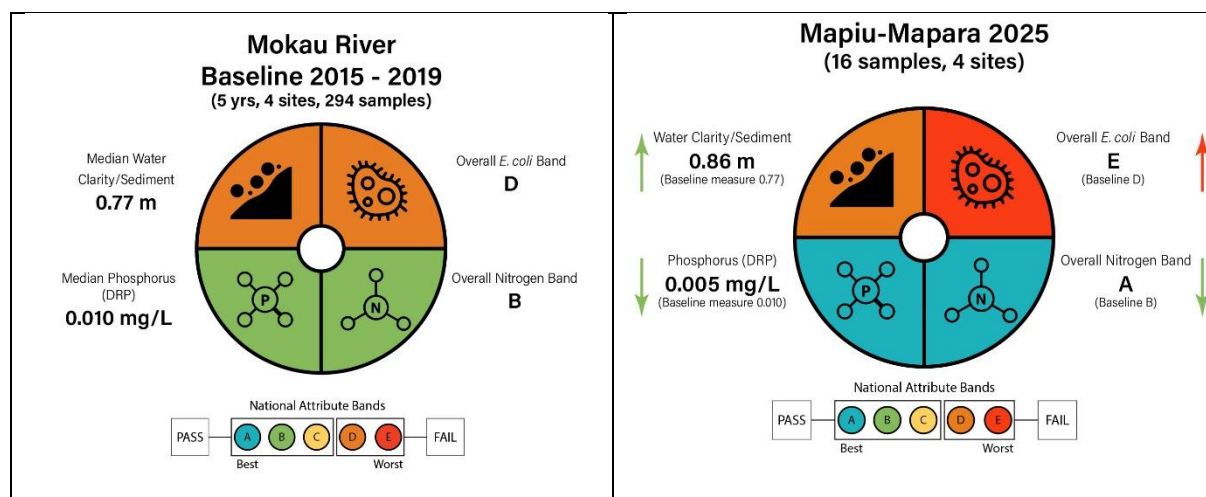


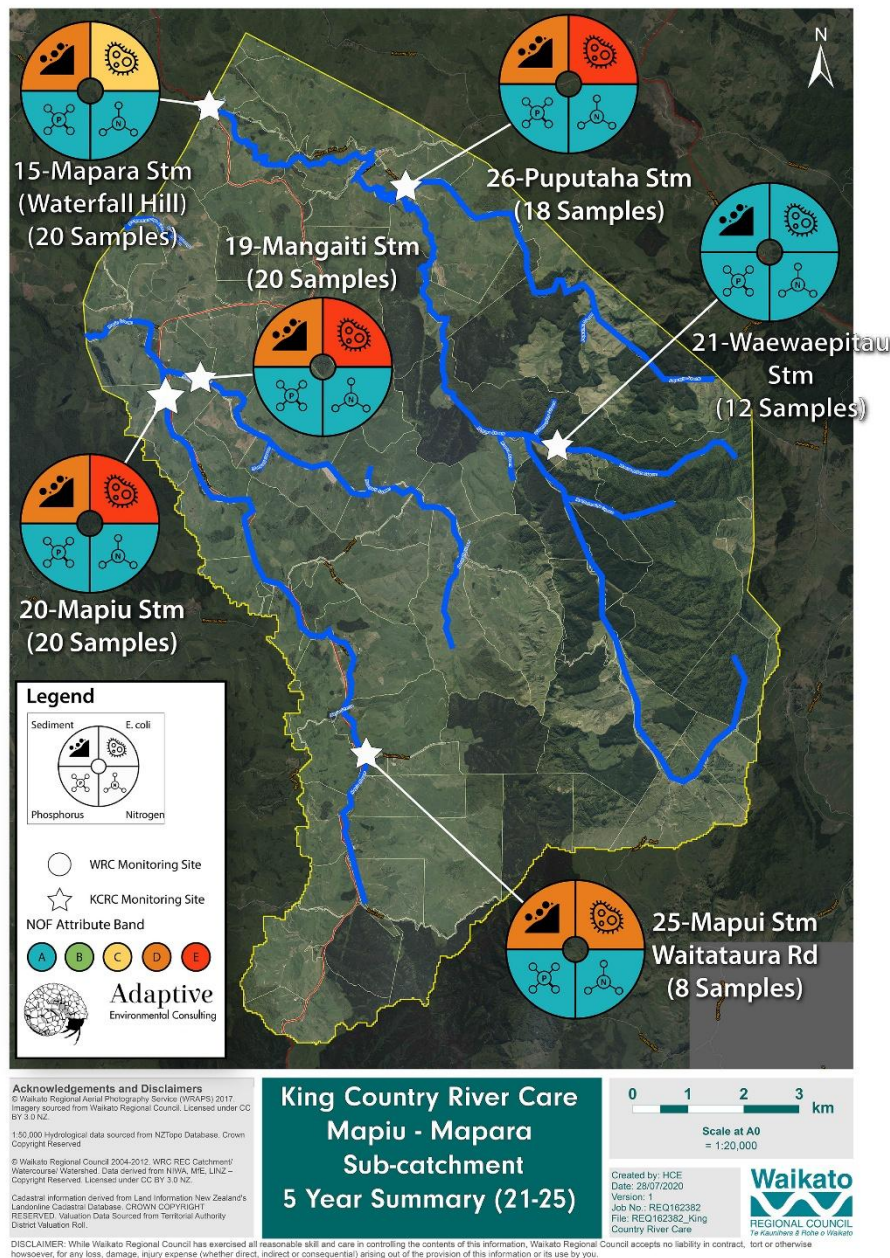
Figure 3. Water quality dials for the Mapiu-Mapara catchment. The dial on the left shows the sub-catchment baseline (2015-2019) and the dial on the right combines results collected in the 2025 monitoring period.

The above results have been assessed against the national freshwater attribute bands under the national policy statement for freshwater (NPS-FM 2020). The overall *E. coli* band is based on the following four measures, the percentage of samples exceeding 540 (CFU/100ml), the percentage of samples exceeding 260 (CFU/100ml), the median value and the 95th percentile (or upper 5% of *E. coli* concentrations). The overall nitrogen band is based on the following six measures, Nitrate Toxicity

(median and 95th percentile), Ammonia Toxicity (median and maximum annual value) and Dissolved Inorganic Nitrogen (median and 95th percentile).

The map below represented five years of monitoring in the Mapiu - Mapara River sub-catchment. Each dial shows the combined water quality results from six sites monitored since the KCRC monitoring programme commenced in 2021. The number of samples represented by each dial is shown, some sites are no longer monitored and therefore, represent fewer samples, see Map 3 below.

Detailed results for 2025 at each site are presented in Table 3 on page 16.



Map 3. Water quality monitoring results for 5 years of data at the six monitoring sites in Mapiu-Mapara catchment.

The Mid Mokau - Piopio Sub-catchment

Key Resources Being Lost from the Land

Monitoring across four sites in 2025 shows that the key resources lost from the Mapiu-Mapara sub-catchment were *E. coli* and Sediment (reflected by low water clarity).

- Loss of Sediment represents a loss of soil and nutrients.
- Elevated *E. coli* represents a loss of organic matter and nutrients as it is largely associated with animal manure in rural catchments.

Catchment Hotspots

- **Sediment:** Suspended sediment was elevated at all sites. The highest levels were in Mapara Stream and the lowest levels were in Mokau River above Wairere Dam.
- ***E. coli*:** Elevated at two sites (Mangapehi River and Mapara Stream), which did not meet national health guidelines for swimming. *E. coli* was also slightly elevated at the other two sites in the Mokau River. *E. coli* concentrations were highest in Mapara stream and lowest in Mokau River above the Wairere Dam.

The below water quality dials summarise the results collected from the sites in the Mid Mokau-Piopio sub-catchment alongside the Mokau River water quality Baseline. The dial on the left shows the baseline for Mokau River, covering 5 years of regional council monitoring at the five WRC monitoring sites (Awakau Road, Mokauiti Stream at 3-way Point Aria, Mangaotaki River-SH3 bridge, Totoro Road and Mangaokewa Road off SH30). The dial on the right combines all data collected at four sites in 2025, 16 samples in total. Arrows indicate either an increase or decrease in values compared to the sub-catchment baseline. **An increase in water clarity is positive** for river health while **an increase in all other indicators may impair river health**.

In 2025, nutrient indicators met national water quality limits, while water clarity/suspended sediment and *E. coli* did not. Compared to the baseline – Water clarity was higher and nutrient indicators were lower (see Figure 4).

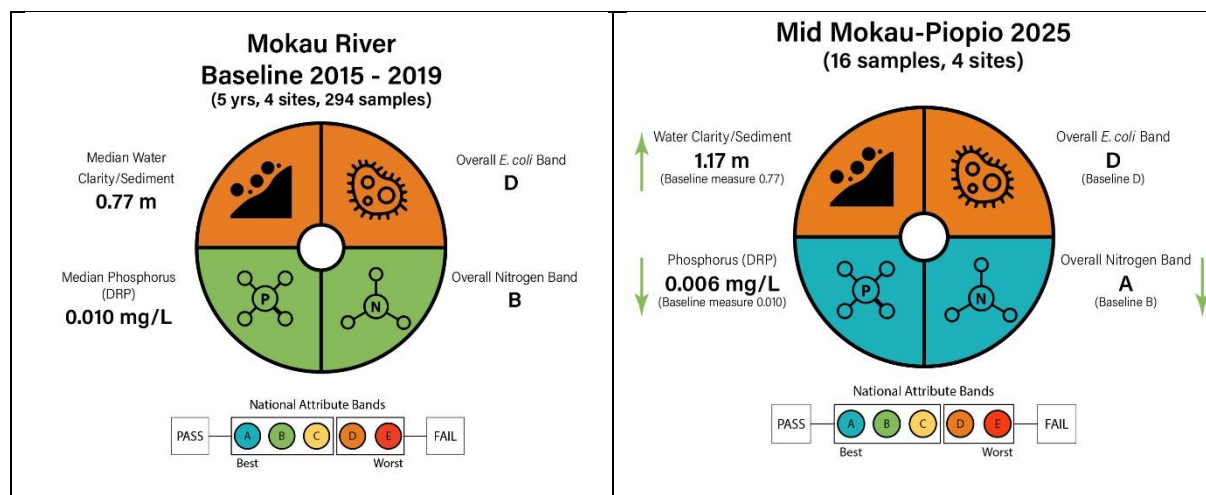


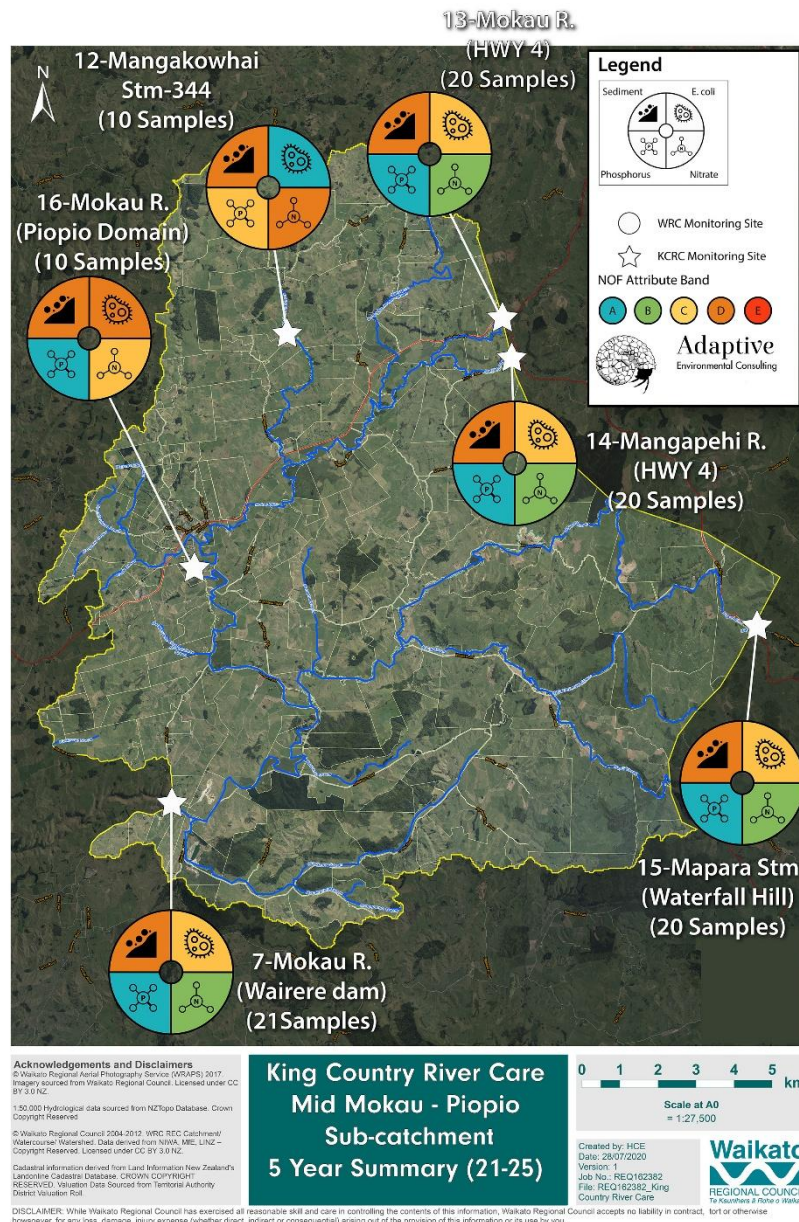
Figure 4. Water quality dials for the four sites in the Mid-Mokau-Piopio catchment. The dial on the left shows the sub-catchment baseline (2015-2019) and the dial on the right combines results collected in the 2025 monitoring period.

The above results have been assessed against the national freshwater attribute bands under the national policy statement for freshwater (NPS-FM 2020). The overall *E. coli* band is based on the following four measures, the percentage of samples exceeding 540 (CFU/100ml), the percentage of

samples exceeding 260 (CFU/100ml), the median value and the 95th percentile (or upper 5% of *E. coli* concentrations). The overall nitrogen band is based on the following six measures, Nitrate Toxicity (median and 95th percentile), Ammonia Toxicity (median and maximum annual value) and Dissolved Inorganic Nitrogen (median and 95th percentile).

The map below represented five years of monitoring in the Mid-Mokau - Piopio sub-catchment. Each dial shows the combined water quality results from six sites monitored since the KCRC monitoring programme commenced in 2021. The number of samples represented by each dial is shown, some sites are no longer monitored and therefore, represent fewer samples, see Map 4 below.

Detailed results for 2025 at each site are presented in Table 4 on page 16.



Map 4. Water quality monitoring results for 5 years of data at the six monitoring sites in Mid-Mokau-Piopio catchment.

The Mokauiti-Aria Sub-catchment

Key Resources Being Lost from the Land

Monitoring across five sites in 2025 shows that the key resources lost from the Mokauiti-Aria sub-catchment were *E. coli* and Sediment (reflected by low water clarity).

- Loss of Sediment represents a loss of soil and nutrients.
- Elevated *E. coli* represents a loss of organic matter and nutrients as it is largely associated with animal manure in rural catchments.

Catchment Hotspots

- ***E. coli***: Measurements were generally lower than 2024, although elevated in Huioteko Stream, which did not meet national health guidelines for swimming. Concentrations were also slightly elevated in Ramaroa Stream.
- **Sediment**: Suspended sediment was highest in Mokauiti Stream, which did not meet the national bottom line, and was lowest in Ramaroa Stream.

The below water quality dials summarise the results collected from the sites in the Mokauiti-Aria sub-catchment alongside the Mokau River water quality baseline. The dial on the left shows the baseline for Mokau River, covering 5 years of regional council monitoring at the five WRC monitoring sites (Awakau Road, Mokauiti Stream at 3-way Point Aria, Mangaotaki River-SH3 bridge, Totoro Road and Mangaokewa Road off SH30). The dial on the right combines all data collected at the five sites in the Mokauiti-Aria sub-catchment in 2025, 27 samples in total. Arrows indicate either an increase or decrease in values compared to the sub-catchment baseline. **An increase in water clarity is positive for river health while an increase in all other indicators may impair river health.**

In 2025, indicators for nutrients and *E. coli* met national water quality limits, while water clarity/suspended sediment and did not. Compared to the baseline – Water clarity was higher while *E. coli* & dissolved reactive phosphorus were lower. Nitrogen remained unchanged. (see Figure 5).

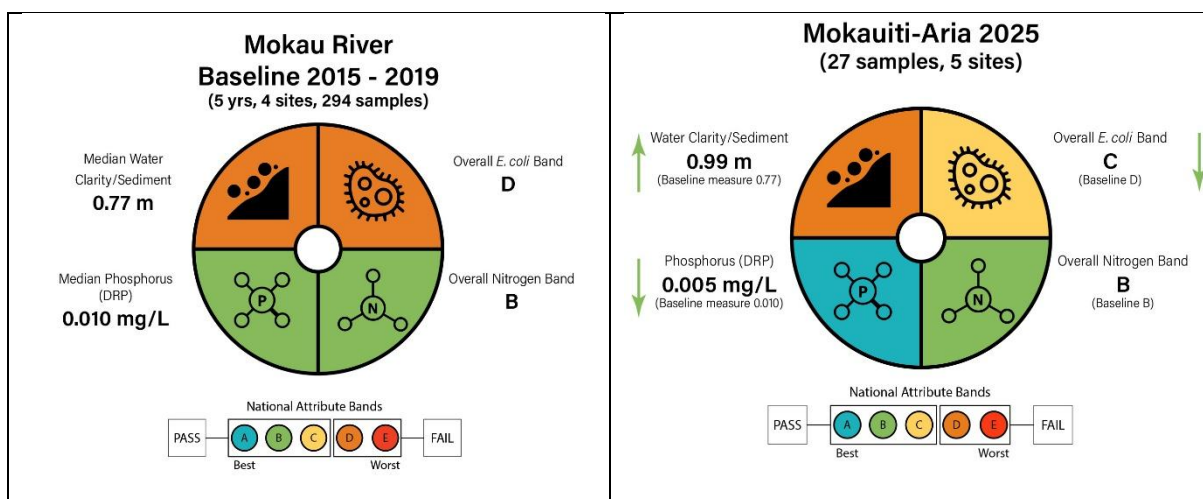


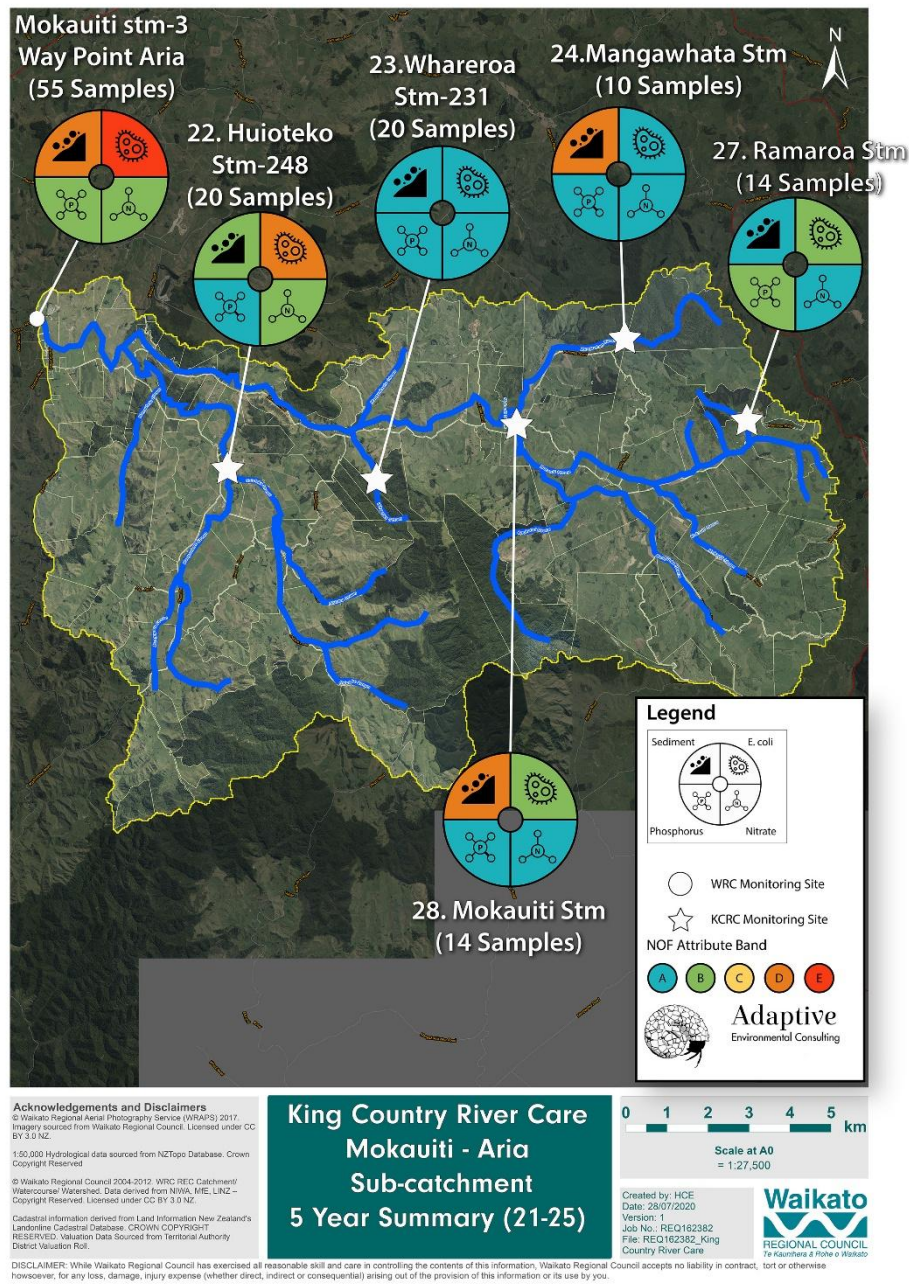
Figure 5. Water quality dials for the five sites in the Mokauiti-Aria catchment. The dial on the left shows the sub-catchment baseline (2015-2019) and the dial on the right combines results collected in the 2025 monitoring period.

The above results have been assessed against the national freshwater attribute bands under the national policy statement for freshwater (NPS-FM 2020). The overall *E. coli* band is based on the following four measures, the percentage of samples exceeding 540 (CFU/100ml), the percentage of samples exceeding 260 (CFU/100ml), the median value and the 95th percentile (or upper 5% of *E. coli*

concentrations). The overall nitrogen band is based on the following six measures, Nitrate Toxicity (median and 95th percentile), Ammonia Toxicity (median and maximum annual value) and Dissolved Inorganic Nitrogen (median and 95th percentile).

The map below represented five years of monitoring in the Mokauiti - Aria sub-catchment. Each dial shows the combined water quality results from six sites monitored since the KCRC monitoring programme commenced in 2021. The number of samples represented by each dial is shown, some sites are no longer monitored and therefore, represent fewer samples, see Map 5 below.

Detailed results for 2025 at each site are presented in Table 5 on page 17.



Map 5. Water quality monitoring results for 5 years of data at the six monitoring sites in Mokauiti-Aria catchment (five WRC Sites & one KCRC site).

The Upper Mokau – Mangapehi Sub-catchment

Key Resources Being Lost from the Land

Monitoring across four sites in 2025 shows that the key resources lost from the Upper Mokau – Mangapehi sub-catchment were *E. coli* and Sediment (reflected by low water clarity).

- Loss of Sediment represents a loss of soil and nutrients.
- Elevated *E. coli* represents a loss of organic matter and nutrients as it is largely associated with animal manure in rural catchments.

Catchment Hotspots

- ***E. coli***: Elevated at two sites (Mangapehi River at HWY 4 and Mangaokewa Road off SH30) – neither site met national health guidelines for swimming. Samples were slightly elevated at the other two sites. Both the highest and lowest concentrations were recorded in the Mangapehi River, with the highest concentrations recorded at HWY 4 and lowest concentrations were recorded in the upper Mangapehi river catchment at site 18.
- **Sediment**: Suspended sediment was elevated at two sites (13-Mokau River-HWY4 and 14-Mangapehi River-HWY4). The highest levels were at 14-Mangapehi River-HWY4 and the lowest levels were at Mangaokewa Rd (Off SH30).

The below water quality dials summarise the results collected from the sites in the Upper Mokau - Mangapehi sub-catchment alongside the Mokau River water quality Baseline. The dial on the left shows the baseline for Mokau River, covering 5 years of regional council monitoring at the five WRC monitoring sites (Awakau Road, Mokauti Stream at 3-way Point Aria, Mangaotaki River-SH3 bridge, Totoro Road and Mangaokewa Road off SH30). The dial on the right combines all data collected at four sites in 2024, 24 samples in total. Arrows indicate either an increase or decrease in values compared to the sub-catchment baseline. **An increase in water clarity is positive** for river health while **an increase in all other indicators may impair river health**.

In 2025, indicators for nutrients and water clarity/suspended sediment met national water quality limits, while *E. coli* did not. Compared to the baseline – Water clarity and phosphorus was higher. *E. coli* and nitrogen were no different from baseline levels (see Figure 6).

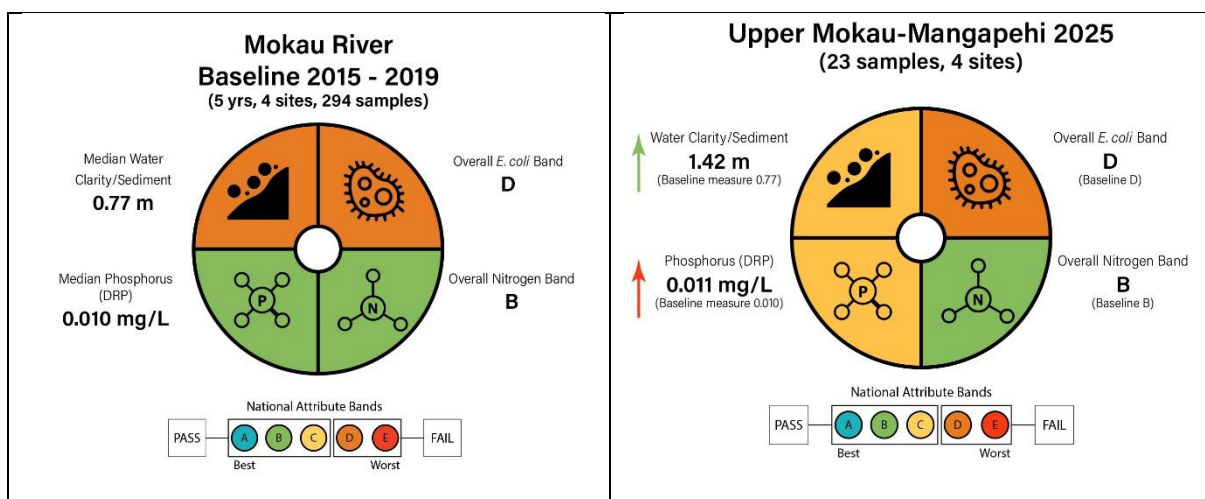
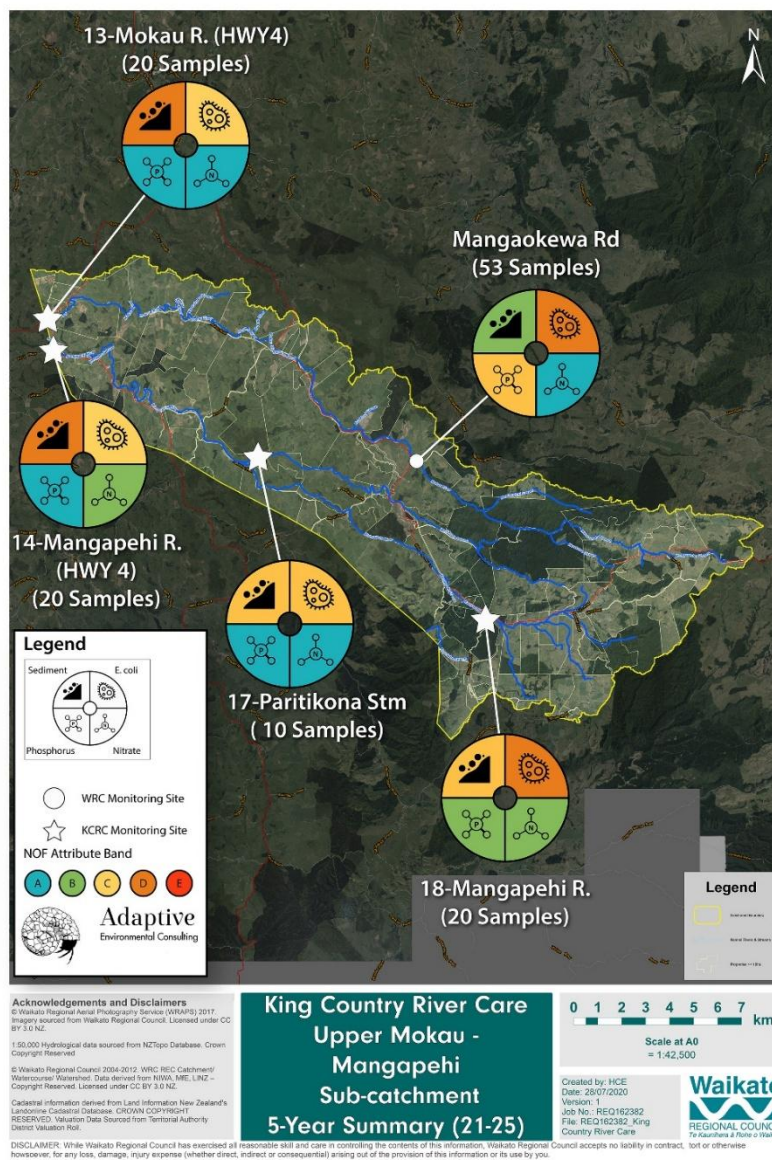


Figure 6. Water quality dials for the Upper Mokau-Mangapehi catchment. The dial on the left shows the sub-catchment baseline (2015-2019) and the dial on the right combines results collected in the 2025 monitoring period.

The above results have been assessed against the national freshwater attribute bands under the national policy statement for freshwater (NPS-FM 2020). The overall *E. coli* band is based on the following four measures, the percentage of samples exceeding 540 (CFU/100ml), the percentage of samples exceeding 260 (CFU/100ml), the median value and the 95th percentile (or upper 5% of *E. coli* concentrations). The overall nitrogen band is based on the following six measures, Nitrate Toxicity (median and 95th percentile), Ammonia Toxicity (median and maximum annual value) and Dissolved Inorganic Nitrogen (median and 95th percentile).

The map below represented five years of monitoring in the Upper Mokau - Mangapehi sub-catchment. Each dial shows the combined water quality results from five sites monitored since the KCRC monitoring programme commenced in 2021. The number of samples represented by each dial is shown, some sites are no longer monitored and therefore, represent fewer samples, see Map 6 below.

Detailed results for 2025 at each site are presented in Table 6 on page 17.



Map 6. Water quality monitoring results for 5 years of data at the five monitoring sites in the Upper Mokau-Mangapehi catchment (one WRC Site & four KCRC sites).

Water Quality Tables

Tables 1 to 6 on pages (15-17) present detailed results for each site in the six Mokau River sub-catchments.

Water quality results have been assessed under national (NPS-FM) water quality targets and have been colour coded as shown the adjacent key, Figure 7.

The overall *E. coli* band is based on the following four measures, the percentage of samples exceeding 540 and 260 (CFU/100ml), the median value and the 95th percentile (or upper 5% of *E. coli* concentrations).

The overall nitrogen band is based on the following six measures, Nitrate Toxicity (median and 95th percentile), Ammonia Toxicity (median and maximum annual value) and Dissolved Inorganic Nitrogen (median and 95th percentile).

	National Attribute Bands
Best ↓ Worst	A
	B
	C
	D
	E Only applicable for <i>E. coli</i>

Figure 7 Key for grading shown in Tables 1 to 6

Table 1) Water quality indicators for individual sites in the Lower Mokau catchment recorded over the 2025 monitoring period. Measured values have been assessed against the National Attribute Bands (NPS-FM, 2020).

Lower Mokau	Number of Samples	Human Health					Ecosystem Health											
		<i>E. coli</i> /100 ml					Water Quality					Sediment						
		% Exc. > 540	% Exc. > 260	Median	95th Percentile	Overall Band	Nitrate Toxicity (mg N/L)		Ammonia Toxicity (mg N/L)		Dissolved Inorganic Nitrogen-DIN (mg N/L)		Overall Nitrogen Band	Dissolved Reactive Phosphorus (mg/L)		Water Clarity Value ¹	National Bottom Line	
					Median	95th Percentile	Median	Annual Maximum	Median	95th Percentile		Median	95th Percentile			Median		
KCRC SITES Lab: Analytica																		
7-Mokau R, above Wairere Dam*	4	25%	25%	124	663	C	0.60	0.76	0.020	0.021	0.61	0.77	B	0.007	0.012	1.33	1.34	
WRC SITES Lab: Hills																		
Awakau Rd	8	13%	38%	135	2,122	D	0.21	0.83	0.009	0.016	0.23	0.83	A	0.004	0.007	0.85	0.61	
Mokauiti Stm-3 Way Point Aria	11	45%	82%	450	4,940	E	0.19	0.83	0.010	0.091	0.21	0.86	A	0.004	0.010	0.71	1.34	
Mangaotaki River-SH3 Br	11	33%	42%	210	3,250	E	0.60	1.01	0.008	0.053	0.60	1.01	B	0.009	0.032	1.52	1.34	
Totoro Rd	11	27%	55%	300	2,450	E	0.45	0.92	0.007	0.032	0.70	0.93	B	0.007	0.021	1.15	1.34	
Mokau R. Baseline (Jan-2015 to Dec-2019)	294	27%	43%	210	6,000	D	0.55	1.00	0.009	0.164	0.559	1.014	B	0.010	0.021	0.77	1.34	

¹Water clarity has been converted from measured turbidity using the formular $\ln(\text{CLAR}) = 1.21 - 0.72 \ln(\text{TURB})$ (Franklin, Booker & Stoffels, 2020).

Table 2) Water quality indicators for individual sites in the Mangaotaki-Mairoa catchment, recorded over the 2025 monitoring period. Measured values have been assessed against the National Attribute Bands (NPS-FM, 2020).

Mangaotaki-Mairoa	Number of Samples	Human Health					Ecosystem Health										
		<i>E. coli</i> /100 ml					Water Quality					Sediment					
		% Exc. > 540	% Exc. > 260	Median	95th Percentile	Overall Band	Nitrate Toxicity (mg N/L)		Ammonia Toxicity (mg N/L)		Dissolved Inorganic Nitrogen-DIN (mg N/L)		Overall Nitrogen Band	Dissolved Reactive Phosphorus (mg/L)		Water Clarity Value ¹	National Bottom Line
					Median	95th Percentile	Median	Annual Maximum	Median	95th Percentile		Median	95th Percentile			Median	
KCRC SITES Lab: Analytica																	
10-Waitanguru Stm-376	4	25%	50%	275	1,159	D	0.68	0.97	0.003	0.010	0.68	0.97	B	0.012	0.014	2.35	1.34
11-Mangaotaki R.	4	50%	100%	705	1,243	E	0.69	0.78	0.003	0.020	0.69	0.78	B	0.009	0.012	1.24	1.34
30-Kihikihi Stm	4	50%	100%	595	1,300	E	0.64	0.97	0.003	0.020	0.64	0.97	B	0.008	0.011	1.12	1.34
WRC SITES Lab: Hills																	
Mangaotaki River-SH3 Br	11	33%	42%	210	3,250	E	0.60	1.01	0.008	0.053	0.60	1.01	B	0.009	0.032	1.52	1.34
Mokau R. Baseline (Jan-2015 to Dec-2019)	294	27%	43%	210	6,000	D	0.55	1.00	0.009	0.164	0.559	1.014	B	0.010	0.021	0.77	1.34

¹Water clarity has been converted from measured turbidity using the formular $\ln(\text{CLAR}) = 1.21 - 0.72 \ln(\text{TURB})$ (Franklin, Booker & Stoffels, 2020).

Table 3) Water quality indicators for individual sites in the Mapiu-Mapara catchment, recorded over the 2025 monitoring period. Measured values have been assessed against the National Attribute Bands (NPS-FM, 2020).

Mapiu-Mapara	Number of Samples	Human Health					Ecosystem Health												
		<i>E. coli</i> /100 ml					Water Quality												
							Nitrate Toxicity (mg N/L)		Ammonia Toxicity (mg N/L)		Dissolved Inorganic Nitrogen-DIN (mg N/L)		Overall Nitrogen Band	Dissolved Reactive Phosphorus (mg/L)		Sediment			
% Exc. > 540	% Exc. > 260	Median	95th Percentile	Overall Band	Median	95th Percentile	Median	Annual Maximum	Median	95th Percentile	Median	95th Percentile		Median	95th Percentile	Water Clarity Value ¹	National Bottom Line		
KCRC SITES Lab: Analytica																			
15-Mapara Stm	4	25%	50%	355	1,605	E	0.36	0.52	0.007	0.009	0.36	0.52	A	0.007	0.008	0.99	1.34		
19-Mangaiti Stm	4	50%	75%	1,320	2,880	E	0.29	0.48	0.029	0.050	0.31	0.50	A	0.001	0.004	0.79	1.34		
20-Mapiu Stm	4	50%	75%	445	2,727	E	0.26	0.51	0.010	0.020	0.27	0.52	A	0.003	0.005	0.86	1.34		
26-Puputaha Stream	4	75%	75%	790	1,494	E	0.43	0.63	0.009	0.013	0.44	0.64	A	0.008	0.009	1.31	1.34		
Mokau R. Baseline (Jan-2015 to Dec-2019)	294	27%	43%	210	6,000	D	0.55	1.00	0.009	0.164	0.559	1.014	B	0.010	0.021	0.77	1.34		

¹Water clarity has been converted from measured turbidity using the formular $\ln(\text{CLAR}) = 1.21 - 0.72 \ln(\text{TURB})$ (Franklin, Booker & Stoffels, 2020).

Table 4) Water quality indicators for individual sites in the Mid-Mokau-Piopio catchment, recorded over the 2025 monitoring period. Measured values have been assessed against the National Attribute Bands (NPS-FM, 2020).

Mid Mokau-Piopio	Number of Samples	Human Health					Ecosystem Health												
		<i>E. coli</i> /100 ml					Water Quality												
							Nitrate Toxicity (mg N/L)		Ammonia Toxicity (mg N/L)		Dissolved Inorganic Nitrogen-DIN (mg N/L)		Overall Nitrogen Band	Dissolved Reactive Phosphorus (mg/L)		Sediment			
% Exc. > 540	% Exc. > 260	Median	95th Percentile	Overall Band	Median	95th Percentile	Median	Annual Maximum	Median	95th Percentile	Median	95th Percentile		Median	95th Percentile	Water Clarity Value ¹	National Bottom Line		
KCRC SITES Lab: Analytica																			
7-Mokau R, above Wairere Dam	4	25%	25%	124	663	C	0.60	0.76	0.020	0.021	0.61	0.77	B	0.007	0.012	1.33	1.34		
13-Mokau R. HWY 4	4	25%	25%	165	764	C	0.33	0.52	0.009	0.020	0.33	0.53	A	0.005	0.010	1.29	1.34		
14-Mangapehi R. HWY 4	4	50%	75%	720	1,340	E	0.46	0.68	0.009	0.010	0.47	0.69	B	0.008	0.012	1.17	1.34		
15-Mapara Stm	4	25%	50%	355	1,605	E	0.36	0.52	0.007	0.009	0.36	0.52	A	0.007	0.008	0.99	1.34		
Mokau R. Baseline (Jan-2015 to Dec-2019)	294	27%	43%	210	6,000	D	0.55	1.00	0.009	0.164	0.559	1.014	B	0.010	0.021	0.77	1.34		

¹Water clarity has been converted from measured turbidity using the formular $\ln(\text{CLAR}) = 1.21 - 0.72 \ln(\text{TURB})$ (Franklin, Booker & Stoffels, 2020).

Table 5) Water quality indicators for individual sites in the Mokauiti-Aria catchment, recorded over the 2025 monitoring period. Measured values have been assessed against the National Attribute Bands (NPS-FM, 2020).

Mokauiti-Aria	Number of Samples	Human Health					Ecosystem Health											
		<i>E. coli</i> /100 ml					Water Quality						Sediment					
Annual Summary 2025							Nitrate Toxicity (mg N/L)		Ammonia Toxicity (mg N/L)		Dissolved Inorganic Nitrogen-DIN (mg N/L)		Overall Nitrogen Band	Dissolved Reactive Phosphorus (mg/L)		Water Clarity Value ¹	National Bottom Line	
		% Exc. > 540	% Exc. > 260	Median	95th Percentile	Overall Band	Median	95th Percentile	Median	Annual Maximum	Median	95th Percentile		Median	95th Percentile	Median	95th Percentile	Median
KCRC SITES Lab: Analytica																		
22-Huioteko Stm-248	4	25%	75%	395	729	D	0.28	0.51	0.115	0.200	0.31	0.64	B	0.009	0.018	0.81	0.61	
23-Whareroa Stm-231	4	0%	25%	83	364	A	0.17	0.23	0.017	0.120	0.22	0.28	A	0.001	0.003	1.01	0.61	
27-Ramara stream	4	25%	25%	67	1,115	C	0.21	0.48	0.003	0.009	0.21	0.48	A	0.012	0.022	1.28	0.61	
28-Mokauiti stream	4	0%	25%	160	338	B	0.23	0.34	0.027	0.040	0.24	0.36	A	0.005	0.010	0.79	1.34	
WRC SITES Lab: Hills																		
Mokauiti Stm-3 Way Point Aria	11	45%	82%	450	4,940	E	0.19	0.83	0.010	0.091	0.21	0.86	A	0.004	0.010	0.71	1.34	
Mokau R. Baseline (Jan-2015 to Dec-2019)	294	27%	43%	210	6,000	D	0.55	1.00	0.009	0.164	0.559	1.014	B	0.010	0.021	0.77	1.34	

¹Water clarity has been converted from measured turbidity using the formular $\ln(\text{CLAR}) = 1.21 - 0.72 \ln(\text{TURB})$ (Franklin, Booker & Stoffels, 2020).

Table 6) Water quality indicators for individual sites in the Upper Mokau-Mangapehi catchment, recorded over the 2025 monitoring period. Measured values have been assessed against the National Attribute Bands (NPS-FM, 2020).

Upper Mokau-Mangapehi	Number of Samples	Human Health					Ecosystem Health											
		<i>E. coli</i> /100 ml					Water Quality						Sediment					
Annual Summary 2025							Nitrate Toxicity (mg N/L)		Ammonia Toxicity (mg N/L)		Dissolved Inorganic Nitrogen-DIN (mg N/L)		Overall Nitrogen Band	Dissolved Reactive Phosphorus (mg/L)		Water Clarity Value ¹	National Bottom Line	
		% Exc. > 540	% Exc. > 260	Median	95th Percentile	Overall Band	Median	95th Percentile	Median	Annual Maximum	Median	95th Percentile		Median	95th Percentile	Median	95th Percentile	Median
KCRC SITES Lab: Analytica																		
13-Mokau R. HWY 4	4	25%	25%	165	764	C	0.33	0.52	0.009	0.020	0.33	0.53	A	0.005	0.010	1.29	1.34	
14-Mangapehi R. HWY 4	4	50%	75%	720	1,340	E	0.46	0.68	0.009	0.010	0.47	0.69	A	0.008	0.012	1.17	1.34	
18-Mangapehi R.	4	0%	50%	260	385	C	0.61	0.96	0.018	0.060	0.61	0.98	B	0.008	0.012	1.58	1.34	
WRC SITES Lab: Hills																		
Mangaokewa Rd (Off SH30)	11	36%	73%	430	665	D	0.42	0.78	< 0.005	< 0.005	0.42	0.68	A	0.012	0.020	1.60	1.34	
Mokau R. Baseline (Jan-2015 to Dec-2019)	294	27%	43%	210	6,000	D	0.55	1.00	0.009	0.164	0.559	1.014	B	0.010	0.021	0.77	1.34	

¹Water clarity has been converted from measured turbidity using the formular $\ln(\text{CLAR}) = 1.21 - 0.72 \ln(\text{TURB})$ (Franklin, Booker & Stoffels, 2020).

River Flow Graph

The graph below shows river flow recorded by Waikato Regional Council at Mokau River between 1 January 2025 and 31 December 2025. The black arrows indicate quarterly sampling days (Figure 8).

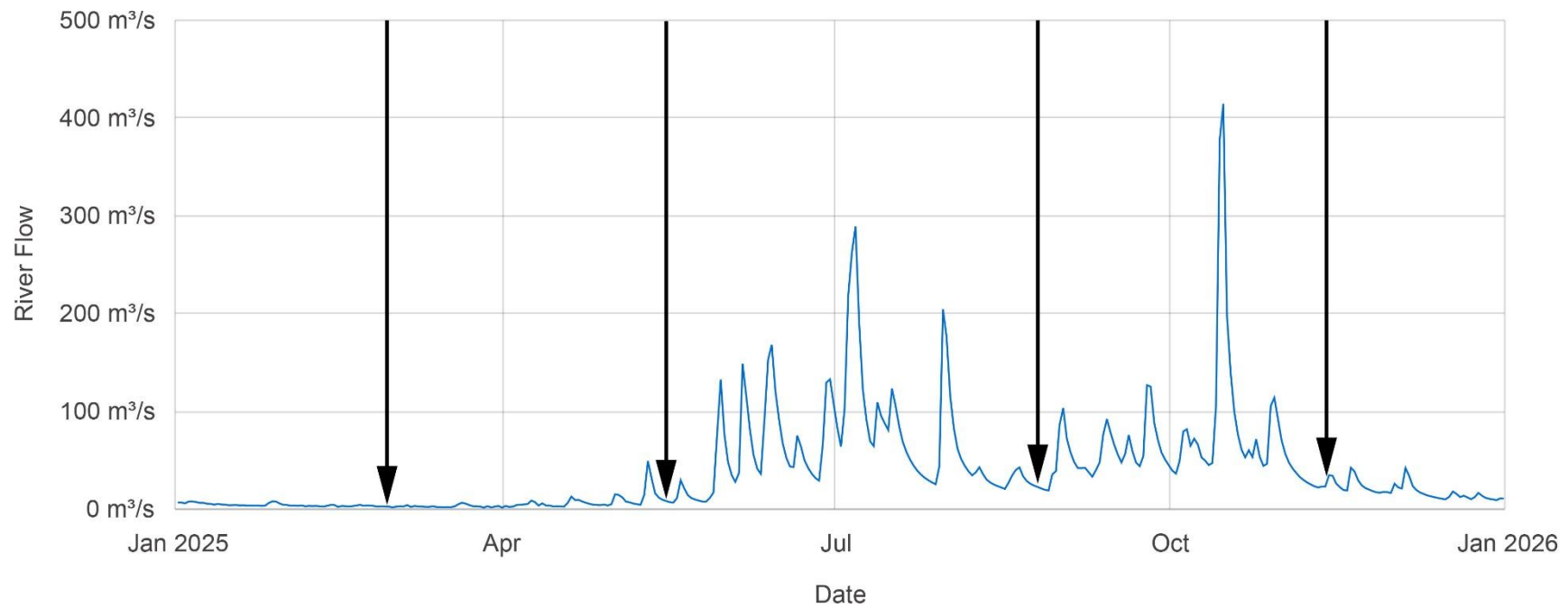


Figure 8. River flow recorded by Waikato Regional Council at Mokau River from 1 January 2025 to 31 December 2025. The black arrows indicate catchment monitoring days.